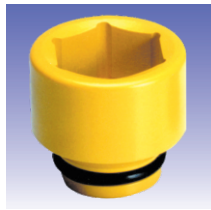
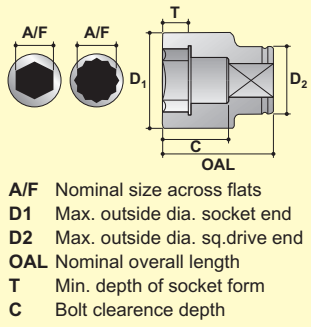


## IMPACT SOCKETS



### METRIC HEXAGON



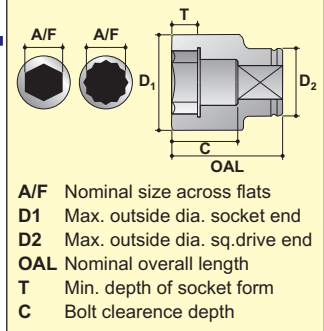
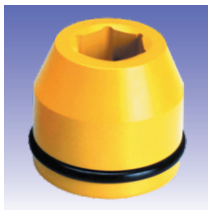
### FRACTIONAL HEXAGON



A/F mm	MODEL NO.	D1 mm	D2 mm	T mm	C mm	OAL mm	Wt. Kg.
19	S-16M19	36.0	51.0	14.0	25.0	55.0	0.51
20	S-16M20	36.0	51.0	14.0	25.0	55.0	0.50
21	S-16M21	38.0	51.0	14.0	25.0	55.0	0.52
22	S-16M22	40.0	51.0	14.0	25.0	55.0	0.53
23	S-16M23	40.0	51.0	14.0	25.0	55.0	0.52
24	S-16M24	42.0	51.0	16.0	27.0	57.0	0.55
25	S-16M25	43.0	51.0	16.0	27.0	57.0	0.55
26	S-16M26	45.0	51.0	16.0	27.0	57.0	0.56
27	S-16M27	46.0	51.0	16.0	27.0	57.0	0.57
28	S-16M28	47.0	51.0	16.0	27.0	57.0	0.57
29	S-16M29	48.0	51.0	18.0	29.0	59.0	0.59
30	S-16M30	49.0	54.0	18.0	29.0	59.0	0.66
31	S-16M31	50.0	54.0	18.0	29.0	59.0	0.66
32	S-16M32	52.0	54.0	18.0	29.0	59.0	0.68
33	S-16M33	54.0	54.0	18.0	29.0	59.0	0.69
34	S-16M34	54.0	54.0	20.0	31.0	61.0	0.70
35	S-16M35	54.0	54.0	20.0	31.0	61.0	0.69
36	S-16M36	57.0	54.0	20.0	31.0	61.0	0.78
37	S-16M37	57.0	54.0	20.0	31.0	61.0	0.76
38	S-16M38	59.0	54.0	22.0	34.0	64.0	0.84
39	S-16M39	60.0	54.0	22.0	34.0	64.0	0.88
40	S-16M40	60.0	54.0	22.0	34.0	64.0	0.85
41	S-16M41	62.0	54.0	22.0	34.0	64.0	0.90
42	S-16M42	64.0	54.0	24.0	36.0	66.0	0.97
43	S-16M43	65.0	54.0	24.0	36.0	66.0	0.98
44	S-16M44	66.0	54.0	24.0	36.0	66.0	0.98
45	S-16M45	68.0	54.0	24.0	36.0	66.0	1.03
46	S-16M46	68.0	54.0	26.0	38.0	68.0	1.02
47	S-16M47	71.0	54.0	26.0	38.0	68.0	1.12
48	S-16M48	71.0	54.0	26.0	38.0	68.0	1.08
49	S-16M49	74.0	54.0	28.0	40.0	70.0	1.17
50	S-16M50	74.0	54.0	28.0	40.0	70.0	1.17
51	S-16M51	77.0	62.0	28.0	40.0	70.0	1.40
52	S-16M52	77.0	62.0	28.0	40.0	70.0	1.40
54	S-16M54	79.0	62.0	28.0	40.0	70.0	1.42
55	S-16M55	79.0	62.0	30.0	44.0	74.0	1.45
56	S-16M56	80.0	62.0	30.0	44.0	74.0	1.46
57	S-16M57	84.0	62.0	30.0	44.0	74.0	1.59
58	S-16M58	84.0	62.0	30.0	44.0	74.0	1.59
59	S-16M59	87.0	62.0	32.0	47.0	77.0	1.75
60	S-16M60	87.0	62.0	32.0	47.0	77.0	1.75
62	S-16M62	90.0	62.0	34.0	49.0	79.0	1.89
65	S-16M65	93.0	62.0	36.0	51.0	81.0	1.99
70	S-16M70	99.0	86.0	38.0	54.0	84.0	2.81
75	S-16M75	104.0	86.0	40.0	56.0	89.0	3.08
80	S-16M80	112.0	86.0	42.0	58.0	91.0	3.54
85	S-16M85	119.0	86.0	44.0	60.0	93.0	3.85
90	S-16M90	122.0	86.0	46.0	62.0	95.0	3.84
95	S-16M95	130.0	106.0	48.0	64.0	97.0	5.13
100	S-16M100	134.0	106.0	50.0	66.0	99.0	5.20
105	S-16M105	142.0	106.0	52.0	68.0	101.0	5.83
110	S-16M110	147.0	106.0	54.0	72.0	105.0	6.00
115	S-16M115	153.0	127.0	56.0	72.0	105.0	7.36

A/F inch	MODEL NO.	D1 inch	D2 inch	T inch	C inch	OAL inch	Wt. lbs.
3/4	S-1612	1.417	2.008	0.551	0.984	2.165	1.13
13/16	S-1613	1.496	2.008	0.551	0.984	2.165	1.13
7/8	S-1614	1.575	2.008	0.551	0.984	2.165	1.14
15/16	S-1615	1.654	2.008	0.630	1.063	2.244	1.20
1	S-1616	1.772	2.008	0.630	1.063	2.244	1.24
1.1/16	S-1617	1.811	2.008	0.630	1.063	2.244	1.25
1.1/8	S-1618	1.890	2.008	0.709	1.142	2.323	1.29
1.3/16	S-1619	1.969	2.126	0.709	1.142	2.323	1.45
1.1/4	S-1620	2.047	2.126	0.709	1.142	2.323	1.49
1.5/16	S-1621	2.126	2.126	0.787	1.220	2.402	1.54
1.3/8	S-1622	2.126	2.126	0.787	1.220	2.402	1.51
1.7/16	S-1623	2.244	2.126	0.787	1.220	2.402	1.68
1.1/2	S-1624	2.323	2.126	0.866	1.339	2.520	1.86
1.9/16	S-1625	2.362	2.126	0.866	1.339	2.520	1.88
1.5/8	S-1626	2.520	2.126	0.945	1.417	2.598	2.13
1.11/16	S-1627	2.559	2.126	0.945	1.417	2.598	2.15
1.3/4	S-1628	2.677	2.126	0.945	1.417	2.598	2.27
1.13/16	S-1629	2.677	2.126	1.024	1.496	2.677	2.25
1.7/8	S-1630	2.795	2.126	1.024	1.496	2.677	2.37
1.15/16	S-1631	2.795	2.126	1.024	1.496	2.677	2.37
2	S-1632	2.963	2.126	1.102	1.575	2.756	2.67
2.1/16	S-1633	2.963	2.126	1.102	1.575	2.756	2.67
2.1/8	S-1634	3.110	2.441	1.102	1.575	2.756	3.13
2.3/16	S-1635	3.150	2.441	1.181	1.732	2.913	3.21
2.1/4	S-1636	3.307	2.441	1.181	1.732	2.913	3.50
2.5/16	S-1637	3.307	2.441	1.181	1.732	2.913	3.50
2.3/8	S-1638	3.405	2.441	1.260	1.850	3.031	3.77
2.7/16	S-1639	3.543	2.441	1.339	1.929	3.110	4.17
2.1/2	S-1640	3.543	2.441	1.339	1.929	3.110	4.17
2.9/16	S-1641	3.711	2.441	1.417	2.008	3.189	4.38
2.5/8	S-1642	3.711	2.441	1.417	2.008	3.189	4.38
2.11/16	S-1643	3.898	3.386	1.496	2.126	3.307	6.19
2.3/4	S-1644	3.898	3.386	1.496	2.126	3.307	6.19
2.13/16	S-1645	3.898	3.386	1.496	2.126	3.307	6.19
2.7/8	S-1646	4.094	3.386	1.575	2.205	3.504	6.77
2.15/16	S-1647	4.094	3.386	1.575	2.205	3.504	6.77
3	S-1648	4.094	3.386	1.575	2.205	3.504	6.77
3.1/16	S-1649	4.425	3.386	1.654	2.283	3.583	7.80
3.1/8	S-1650	4.425	3.386	1.654	2.283	3.583	7.80
3.3/16	S-1651	4.425	3.386	1.654	2.283	3.583	7.80
3.1/4	S-1652	4.651	3.386	1.732	2.362	3.661	8.13
3.5/16	S-1653	4.742	3.386	1.732	2.362	3.661	8.48
3.3/8	S-1654	4.742	3.386	1.732	2.362	3.661	8.48
3.7/16	S-1655	4.803	3.386	1.811	2.441	3.740	8.44
3.1/2	S-1656	4.803	3.386	1.811	2.441	3.740	8.44
3.5/8	S-1658	5.118	4.173	1.890	2.520	3.819	11.29
3.3/4	S-1660	5.118	4.173	1.890	2.520	3.819	11.29
3.7/8	S-1662	5.276	4.173	1.969	2.598	3.898	11.44
4	S-1664	5.591	4.173	2.047	2.677	3.976	12.82
4.1/8	S-1666	5.591	4.173	2.047	2.677	3.976	12.82
4.1/4	S-1668	5.727	4.173	2.126	2.835	4.134	13.05
4.3/8	S-1670	6.024	5.000	2.205	2.835	4.134	16.20
4.1/2	S-1672	6.024	5.000	2.205	2.835	4.134	16.20

## IMPACT SOCKETS



### METRIC DEEP HEXAGON

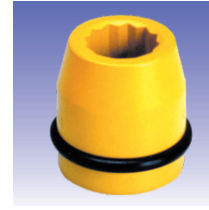
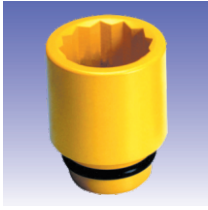


A/F mm	MODEL NO.	D1 mm	D2 mm	T mm	C mm	OAL mm	Wt. Kg.
19	S-16M19L	36.0	51.0	14.0	72.0	102.0	0.79
20	S-16M20L	36.0	51.0	14.0	72.0	102.0	0.76
21	S-16M21L	38.0	51.0	14.0	72.0	102.0	0.81
22	S-16M22L	40.0	51.0	14.0	72.0	102.0	0.86
23	S-16M23L	40.0	51.0	14.0	72.0	102.0	0.84
24	S-16M24L	42.0	51.0	16.0	72.0	102.0	0.89
25	S-16M25L	43.0	51.0	16.0	72.0	102.0	0.90
26	S-16M26L	45.0	51.0	16.0	72.0	102.0	0.95
27	S-16M27L	46.0	51.0	16.0	72.0	102.0	0.97
28	S-16M28L	47.0	51.0	16.0	72.0	102.0	0.98
29	S-16M29L	48.0	51.0	18.0	72.0	102.0	0.99
30	S-16M30L	49.0	54.0	18.0	72.0	102.0	1.07
31	S-16M31L	50.0	54.0	18.0	72.0	102.0	1.09
32	S-16M32L	52.0	54.0	18.0	72.0	102.0	1.14
33	S-16M33L	54.0	54.0	18.0	72.0	102.0	1.19
34	S-16M34L	54.0	54.0	20.0	72.0	102.0	1.16
35	S-16M35L	54.0	54.0	20.0	72.0	102.0	1.13
36	S-16M36L	57.0	54.0	20.0	69.0	102.0	1.31
37	S-16M37L	57.0	54.0	20.0	69.0	102.0	1.28
38	S-16M38L	59.0	54.0	22.0	69.0	102.0	1.38
39	S-16M39L	60.0	54.0	22.0	69.0	102.0	1.41
40	S-16M40L	60.0	54.0	22.0	69.0	102.0	1.37
41	S-16M41L	62.0	54.0	22.0	69.0	102.0	1.45
42	S-16M42L	64.0	54.0	24.0	69.0	102.0	1.53
43	S-16M43L	66.0	54.0	24.0	69.0	102.0	1.61
44	S-16M44L	66.0	54.0	24.0	69.0	102.0	1.56
45	S-16M45L	68.0	54.0	24.0	69.0	102.0	1.65
46	S-16M46L	68.0	54.0	26.0	69.0	102.0	1.59
47	S-16M47L	71.0	54.0	26.0	67.0	102.0	1.73
48	S-16M48L	71.0	54.0	26.0	67.0	102.0	1.68
49	S-16M49L	74.0	54.0	28.0	80.0	110.0	1.96
50	S-16M50L	74.0	54.0	28.0	80.0	110.0	1.96
51	S-16M51L	77.0	62.0	28.0	75.0	110.0	2.23
52	S-16M52L	77.0	62.0	28.0	75.0	110.0	2.23
54	S-16M54L	79.0	62.0	28.0	75.0	110.0	2.26
55	S-16M55L	79.0	62.0	30.0	75.0	110.0	2.19
56	S-16M56L	80.0	62.0	30.0	75.0	110.0	2.21
57	S-16M57L	84.0	62.0	30.0	75.0	110.0	2.42
58	S-16M58L	84.0	62.0	30.0	75.0	110.0	2.42
59	S-16M59L	87.0	62.0	32.0	80.0	115.0	2.71
60	S-16M60L	87.0	62.0	32.0	80.0	115.0	2.71
62	S-16M62L	90.0	62.0	32.0	80.0	115.0	2.86
65	S-16M65L	93.0	62.0	34.0	80.0	115.0	2.90
70	S-16M70L	99.0	62.0	36.0	85.0	120.0	3.28
75	S-16M75L	104.0	86.0	38.0	85.0	120.0	4.17
80	S-16M80L	112.0	86.0	40.0	85.0	120.0	4.73
85	S-16M85L	119.0	86.0	42.0	90.0	125.0	5.27
90	S-16M90L	122.0	86.0	44.0	90.0	125.0	5.15
95	S-16M95L	130.0	106.0	46.0	95.0	130.0	6.91
100	S-16M100L	134.0	106.0	48.0	95.0	130.0	6.88
105	S-16M105L	142.0	106.0	50.0	95.0	130.0	7.58
110	S-16M110L	147.0	106.0	52.0	105.0	140.0	8.38
115	S-16M115L	153.0	127.0	54.0	105.0	140.0	9.81

### FRACTIONAL DEEP HEXAGON



A/F inch	MODEL NO.	D1 inch	D2 inch	T inch	C inch	OAL inch	Wt. lbs.
3/4	S-1612L	1.417	2.008	0.551	2.835	4.016	1.73
13/16	S-1613L	1.496	2.008	0.551	2.835	4.016	1.78
7/8	S-1614L	1.575	2.008	0.551	2.835	4.016	1.85
15/16	S-1615L	1.654	2.008	0.630	2.835	4.016	1.95
1	S-1616L	1.772	2.008	0.630	2.835	4.016	2.10
1.1/16	S-1617L	1.811	2.008	0.630	2.835	4.016	2.13
1.1/8	S-1618L	1.890	2.008	0.709	2.835	4.016	2.18
1.3/16	S-1619L	1.969	2.126	0.709	2.835	4.016	2.39
1.1/4	S-1620L	2.047	2.126	0.709	2.835	4.016	2.51
1.5/16	S-1621L	2.126	2.126	0.787	2.835	4.016	2.56
1.3/8	S-1622L	2.126	2.126	0.787	2.835	4.016	2.49
1.7/16	S-1623L	2.244	2.126	0.787	2.717	4.016	2.82
1.1/2	S-1624L	2.323	2.126	0.866	2.717	4.016	3.03
1.9/16	S-1625L	2.362	2.126	0.866	2.717	4.016	3.02
1.5/8	S-1626L	2.520	2.126	0.945	2.717	4.016	3.36
1.11/16	S-1627L	2.596	2.126	0.945	2.717	4.016	3.53
1.3/4	S-1628L	2.677	2.126	0.945	2.717	4.016	3.62
1.13/16	S-1629L	2.677	2.126	1.024	2.717	4.016	3.49
1.7/8	S-1630L	2.795	2.126	1.024	2.638	4.016	3.69
1.15/16	S-1631L	2.795	2.126	1.024	2.638	4.016	3.69
2	S-1632L	2.963	2.126	1.102	3.150	4.331	4.41
2.1/16	S-1633L	2.923	2.126	1.102	3.150	4.331	4.41
2.1/8	S-1634L	3.110	2.441	1.181	2.953	4.331	4.81
2.3/16	S-1635L	3.150	2.441	1.181	2.953	4.331	4.85
2.1/4	S-1636L	3.307	2.441	1.181	2.953	4.331	5.32
2.5/16	S-1637L	2.598	2.126	0.945	2.717	4.016	3.44
2.3/8	S-1638L	3.405	2.441	1.260	3.150	4.528	6.04
2.7/16	S-1639L	3.543	2.441	1.260	3.150	4.528	6.30
2.1/2	S-1640L	2.796	2.126	1.024	2.638	4.016	3.81
2.9/16	S-1641L	3.741	2.441	1.339	3.150	4.528	6.38
2.5/8	S-1642L	3.741	2.441	1.339	3.150	4.528	6.38
2.11/16	S-1643L	3.031	2.441	1.102	2.953	4.331	4.90
2.3/4	S-1644L	3.898	2.441	1.417	3.346	4.724	7.22
2.13/16	S-1645L	3.898	2.441	1.417	3.346	4.724	7.22
2.7/8	S-1646L	4.094	3.386	1.496	3.346	4.724	9.18
2.15/16	S-1647L	4.094	3.386	1.496	3.346	4.724	9.18
3	S-1648L	4.094	3.386	1.496	3.346	4.724	9.18
3.1/16	S-1649L	4.425	3.386	1.575	3.346	4.724	10.40
3.1/8	S-1650L	4.425	3.386	1.575	3.346	4.724	10.40
3.3/16	S-1651L	4.425	3.386	1.575	3.346	4.724	10.40
3.1/4	S-1652L	4.651	3.386	1.654	3.543	4.921	10.84
3.5/16	S-1653L	4.751	3.386	1.654	3.543	4.921	11.60
3.3/8	S-1654L	4.751	3.386	1.654	3.543	4.921	11.60
3.7/16	S-1655L	4.803	3.386	1.732	3.543	4.921	11.45
3.1/2	S-1656L	4.803	3.386	1.732	3.543	4.921	11.45
3.5/8	S-1658L	5.118	4.173	1.811	3.740	5.118	15.20
3.3/4	S-1660L	5.118	4.173	1.811	3.740	5.118	15.20
3.7/8	S-1662L	5.276	4.173	1.890	3.740	5.118	15.14
4	S-1664L	5.591	4.173	1.969	3.740	5.118	16.68
4.1/8	S-1666L	5.591	4.173	1.969	3.740	5.118	16.68
4.1/4	S-1668L	5.787	4.173	2.047	4.134	5.512	18.58
4.3/8	S-1670L	6.024	5.000	2.126	4.134	5.512	21.59
4.1/2	S-1672L	6.024	5.000	2.126	4.134	5.512	21.59



### METRIC BIHEXAGON



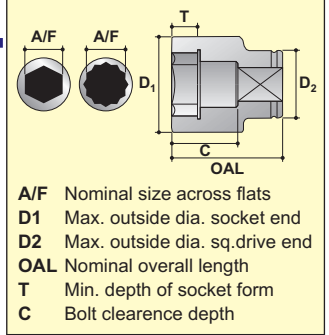
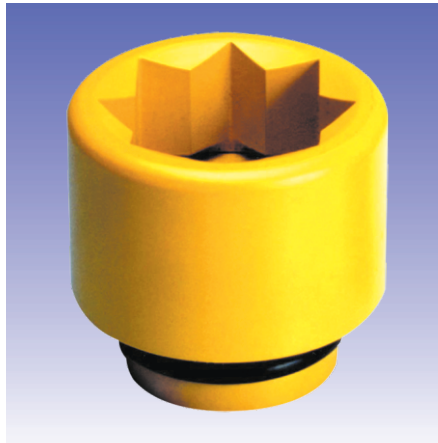
A/F mm	MODEL NO.	D1 mm	D2 mm	T mm	C mm	OAL mm	Wt. Kg.
19	16M19DH	36.0	51.0	14.0	25.0	55.0	0.51
20	16M20DH	36.0	51.0	14.0	25.0	55.0	0.50
21	16M21DH	38.0	51.0	14.0	25.0	55.0	0.52
22	16M22DH	40.0	51.0	14.0	25.0	55.0	0.53
23	16M23DH	40.0	51.0	14.0	25.0	55.0	0.52
24	16M24DH	42.0	51.0	16.0	27.0	57.0	0.55
25	16M25DH	43.0	51.0	16.0	27.0	57.0	0.55
26	16M26DH	45.0	51.0	16.0	27.0	57.0	0.56
27	16M27DH	46.0	51.0	16.0	27.0	57.0	0.57
28	16M28DH	47.0	51.0	16.0	27.0	57.0	0.57
29	16M29DH	48.0	51.0	18.0	29.0	59.0	0.59
30	16M30DH	49.0	54.0	18.0	29.0	59.0	0.66
31	16M31DH	50.0	54.0	18.0	29.0	59.0	0.66
32	16M32DH	52.0	54.0	18.0	29.0	59.0	0.68
33	16M33DH	54.0	54.0	18.0	29.0	59.0	0.69
34	16M34DH	54.0	54.0	20.0	31.0	61.0	0.70
35	16M35DH	54.0	54.0	20.0	31.0	61.0	0.69
36	16M36DH	57.0	54.0	20.0	31.0	61.0	0.78
37	16M37DH	57.0	54.0	20.0	31.0	61.0	0.76
38	16M38DH	59.0	54.0	22.0	34.0	64.0	0.84
39	16M39DH	60.0	54.0	22.0	34.0	64.0	0.88
40	16M40DH	60.0	54.0	22.0	34.0	64.0	0.85
41	16M41DH	62.0	54.0	22.0	34.0	64.0	0.90
42	16M42DH	64.0	54.0	24.0	36.0	66.0	0.97
43	16M43DH	65.0	54.0	24.0	36.0	66.0	0.98
44	16M44DH	66.0	54.0	24.0	36.0	66.0	0.98
45	16M45DH	68.0	54.0	24.0	36.0	66.0	1.03
46	16M46DH	68.0	54.0	26.0	38.0	68.0	1.02
47	16M47DH	71.0	54.0	26.0	38.0	68.0	1.12
48	16M48DH	71.0	54.0	26.0	38.0	68.0	1.08
49	16M49DH	74.0	54.0	28.0	40.0	70.0	1.17
50	16M50DH	74.0	54.0	28.0	40.0	70.0	1.17
51	16M51DH	77.0	62.0	28.0	40.0	70.0	1.40
52	16M52DH	77.0	62.0	28.0	40.0	70.0	1.40
54	16M54DH	79.0	62.0	28.0	40.0	70.0	1.42
55	16M55DH	79.0	62.0	30.0	44.0	74.0	1.45
56	16M56DH	80.0	62.0	30.0	44.0	74.0	1.46
57	16M57DH	84.0	62.0	30.0	44.0	74.0	1.59
58	16M58DH	84.0	62.0	30.0	44.0	74.0	1.59
59	16M59DH	87.0	62.0	32.0	47.0	77.0	1.75
60	16M60DH	87.0	62.0	32.0	47.0	77.0	1.75
62	16M62DH	90.0	62.0	34.0	49.0	79.0	1.89
65	16M65DH	93.0	62.0	36.0	51.0	81.0	1.99
70	16M70DH	99.0	86.0	38.0	54.0	84.0	2.81
75	16M75DH	104.0	86.0	40.0	56.0	89.0	3.08
80	16M80DH	112.0	86.0	42.0	58.0	91.0	3.54
85	16M85DH	119.0	86.0	44.0	60.0	93.0	3.85
90	16M90DH	122.0	86.0	46.0	62.0	95.0	3.84
95	16M95DH	130.0	106.0	48.0	64.0	97.0	5.13

### FRACTIONAL BIHEXAGON



A/F inch	MODEL NO.	D1 inch	D2 inch	T inch	C inch	OAL inch	Wt. lbs.
3/4	1612DH	1.417	2.008	0.551	0.984	2.165	1.13
13/16	1613DH	1.496	2.008	0.551	0.984	2.165	1.13
7/8	1614DH	1.575	2.008	0.551	0.984	2.165	1.14
15/16	1615DH	1.654	2.008	0.630	1.063	2.244	1.20
1	1616DH	1.772	2.008	0.630	1.063	2.244	1.24
1.1/16	1617DH	1.811	2.008	0.630	1.063	2.244	1.25
1.1/8	1618DH	1.890	2.008	0.709	1.142	2.323	1.29
1.3/16	1619DH	1.969	2.126	0.709	1.142	2.323	1.45
1.1/4	1620DH	2.047	2.126	0.709	1.142	2.323	1.49
1.5/16	1621DH	2.126	2.126	0.787	1.220	2.402	1.54
1.3/8	1622DH	2.126	2.126	0.787	1.220	2.402	1.51
1.7/16	1623DH	2.244	2.126	0.787	1.220	2.402	1.68
1.1/2	1624DH	2.323	2.126	0.866	1.339	2.520	1.86
1.9/16	1625DH	2.362	2.126	0.866	1.339	2.520	1.88
1.5/8	1626DH	2.520	2.126	0.945	1.417	2.598	2.13
1.11/16	1627DH	2.559	2.126	0.945	1.417	2.598	2.15
1.3/4	1628DH	2.677	2.126	0.945	1.417	2.598	2.27
1.13/16	1629DH	2.677	2.126	1.024	1.496	2.677	2.25
1.7/8	1630DH	2.795	2.126	1.024	1.496	2.677	2.37
1.15/16	1631DH	2.795	2.126	1.024	1.496	2.677	2.37
2	1632DH	2.963	2.126	1.102	1.575	2.756	2.67
2.1/16	1633DH	2.963	2.126	1.102	1.575	2.756	2.67
2.1/8	1634DH	3.110	2.441	1.102	1.575	2.756	3.13
2.3/16	1635DH	3.150	2.441	1.181	1.732	2.913	3.21
2.1/4	1636DH	3.307	2.441	1.181	1.732	2.913	3.50
2.5/16	1637DH	3.307	2.441	1.181	1.732	2.913	3.50
2.3/8	1638DH	3.405	2.441	1.260	1.850	3.031	3.77
2.7/16	1639DH	3.543	2.441	1.339	1.929	3.110	4.17
2.1/2	1640DH	3.543	2.441	1.339	1.929	3.110	4.17
2.9/16	1641DH	3.711	2.441	1.417	2.008	3.189	4.38
2.5/8	1642DH	3.711	2.441	1.417	2.008	3.189	4.38
2.11/16	1643DH	3.898	3.386	1.496	2.126	3.307	6.19
2.3/4	1644DH	3.898	3.386	1.496	2.126	3.307	6.19
2.13/16	1645DH	3.898	3.386	1.496	2.126	3.307	6.19
2.7/8	1646DH	4.094	3.386	1.575	2.205	3.504	6.77
2.15/16	1647DH	4.094	3.386	1.575	2.205	3.504	6.77
3	1648DH	4.094	3.386	1.575	2.205	3.504	6.77
3.1/16	1649DH	4.425	3.386	1.654	2.283	3.583	7.80
3.1/8	1650DH	4.425	3.386	1.654	2.283	3.583	7.80
3.3/16	1651DH	4.425	3.386	1.654	2.283	3.583	7.80
3.1/4	1652DH	4.651	3.386	1.732	2.362	3.661	8.13
3.5/16	1653DH	4.742	3.386	1.732	2.362	3.661	8.48
3.3/8	1654DH	4.742	3.386	1.732	2.362	3.661	8.48
3.7/16	1655DH	4.803	3.386	1.811	2.441	3.740	8.44
3.1/2	1656DH	4.803	3.386	1.811	2.441	3.740	8.44
3.5/8	1658DH	5.118	4.173	1.890	2.520	3.819	11.29
3.3/4	1660DH	5.118	4.173	1.890	2.520	3.819	11.29
3.7/8	1662DH	5.276	4.173	1.969	2.598	3.898	11.44

## IMPACT SOCKETS



### METRIC BISQUARE



A/F mm	MODEL NO.	D1 mm	D2 mm	T mm	C mm	OAL mm	Wt. Kg.
32	16M32DS	65.0	54.0	21.0	28.0	58.0	0.86
33	16M33DS	65.0	54.0	21.0	28.0	58.0	0.86
34	16M34DS	68.0	54.0	21.0	31.0	61.0	0.90
35	16M35DS	68.0	54.0	21.0	31.0	61.0	0.90
36	16M36DS	71.0	54.0	25.0	31.0	61.0	0.92
38	16M38DS	74.0	54.0	25.0	35.0	65.0	1.15
39	16M39DS	74.0	54.0	25.0	35.0	65.0	1.15
40	16M40DS	77.0	54.0	25.0	35.0	65.0	1.16
41	16M41DS	77.0	54.0	28.0	35.0	65.0	1.16
42	16M42DS	80.0	54.0	28.0	35.0	65.0	1.36
43	16M43DS	80.0	54.0	28.0	40.0	70.0	1.46
46	16M46DS	86.0	54.0	28.0	40.0	70.0	1.50
50	16M50DS	90.0	54.0	28.0	43.0	73.0	1.70
51	16M51DS	93.0	54.0	28.0	43.0	73.0	1.80
54	16M54DS	98.0	54.0	28.0	47.0	77.0	2.25
55	16M55DS	98.0	54.0	30.0	47.0	77.0	2.25
57	16M57DS	103.0	86.0	30.0	47.0	77.0	2.95
60	16M60DS	106.0	86.0	32.0	53.0	83.0	3.20
65	16M65DS	112.0	86.0	38.0	56.0	86.0	3.65

### FRACTIONAL BISQUARE



A/F inch	MODEL NO.	D1 inch	D2 inch	T inch	C inch	OAL inch	Wt. lbs.
1.1/4	1620DS	2.559	2.125	0.826	1.141	2.283	1.89
1.5/16	1621DS	2.559	2.125	0.826	1.141	2.283	1.89
1.3/8	1622DS	2.677	2.125	0.826	1.220	2.401	1.98
1.7/16	1623DS	2.795	2.125	0.984	1.220	2.401	2.02
1.1/2	1624DS	2.913	2.125	0.984	1.377	2.559	2.53
1.9/16	1625DS	2.834	2.125	0.984	1.377	2.559	2.55
1.5/8	1626DS	3.031	2.125	1.102	1.377	2.559	2.55
1.11/16	1627DS	3.149	2.125	1.102	1.574	2.755	3.30
1.3/4	1628DS	3.267	2.125	1.102	1.574	2.755	3.30
1.13/16	1629DS	3.385	2.125	1.102	1.574	2.755	3.52
1.7/8	1630DS	3.503	2.125	1.102	1.574	2.755	3.52
2	1632DS	3.661	2.125	1.102	1.692	2.874	3.96
2.1/16	1633DS	3.779	2.125	1.102	1.692	2.874	4.95
2.1/8	1634DS	3.779	2.125	1.102	1.850	3.031	4.95
2.3/16	1635DS	3.937	2.125	1.181	1.850	3.031	6.49
2.1/4	1636DS	4.055	3.385	1.181	2.007	3.188	6.49
2.3/8	1638DS	4.173	3.385	1.259	2.086	3.267	7.04
2.1/2	1640DS	4.409	3.385	1.259	2.204	3.385	8.47

### METRIC DEEP BISQUARE



A/F mm	MODEL NO.	D1 mm	D2 mm	T mm	C mm	OAL mm	Wt. Kg.
32	16M32LDS	65.0	54.0	21.0	80.0	110.0	1.46
33	16M33LDS	65.0	54.0	21.0	80.0	110.0	1.46
34	16M34LDS	68.0	54.0	21.0	80.0	110.0	1.50
35	16M35LDS	68.0	54.0	21.0	80.0	110.0	1.50
36	16M36LDS	71.0	54.0	25.0	80.0	110.0	1.52
38	16M38LDS	74.0	54.0	25.0	80.0	110.0	1.75
39	16M39LDS	74.0	54.0	25.0	80.0	110.0	1.75
40	16M40LDS	77.0	54.0	25.0	80.0	110.0	1.76
41	16M41LDS	77.0	54.0	28.0	80.0	110.0	1.76
42	16M42LDS	80.0	54.0	28.0	80.0	110.0	1.96
43	16M43LDS	80.0	54.0	28.0	80.0	110.0	2.16
46	16M46LDS	86.0	54.0	28.0	80.0	110.0	2.30
50	16M50LDS	90.0	54.0	28.0	80.0	110.0	2.50
51	16M51LDS	93.0	54.0	28.0	80.0	110.0	2.60
54	16M54LDS	98.0	54.0	28.0	80.0	110.0	2.95
55	16M55LDS	98.0	54.0	30.0	80.0	110.0	2.95
57	16M57LDS	103.0	86.0	30.0	80.0	110.0	3.65
60	16M60LDS	106.0	86.0	32.0	100.0	130.0	4.00
65	16M65LDS	112.0	86.0	38.0	100.0	130.0	4.55

### FRACTIONAL DEEP BISQUARE



A/F inch	MODEL NO.	D1 inch	D2 inch	T inch	C inch	OAL inch	Wt. lbs.
1.1/4	1620LDS	2.559	2.125	0.826	3.149	4.330	3.21
1.5/16	1621LDS	2.559	2.125	0.826	3.149	4.330	3.21
1.3/8	1622LDS	2.677	2.125	0.826	3.149	4.330	3.30
1.7/16	1623LDS	2.795	2.125	0.984	3.149	4.330	3.34
1.1/2	1624LDS	2.913	2.125	0.984	3.149	4.330	3.85
1.9/16	1625LDS	2.834	2.125	0.984	3.149	4.330	3.87
1.5/8	1626LDS	3.031	2.125	1.102	3.149	4.330	3.87
1.11/16	1627LDS	3.149	2.125	1.102	3.149	4.330	4.75
1.3/4	1628LDS	3.267	2.125	1.102	3.149	4.330	4.84
1.13/16	1629LDS	3.385	2.125	1.102	3.149	4.330	5.06
1.7/8	1630LDS	3.503	2.125	1.102	3.149	4.330	5.28
2	1632LDS	3.661	2.125	1.102	3.149	4.330	5.72
2.1/16	1633LDS	3.779	2.125	1.102	3.149	4.330	6.49
2.1/8	1634LDS	3.779	2.125	1.102	3.149	4.330	6.49
2.3/16	1635LDS	3.937	2.125	1.181	3.149	4.330	8.03
2.1/4	1636LDS	4.055	3.385	1.181	3.149	4.330	8.03
2.3/8	1638LDS	4.173	3.385	1.259	3.937	5.118	8.80
2.1/2	1640LDS	4.409	3.385	1.259	3.937	5.118	10.01

### METRIC HEXAGON



A/F mm	MODEL NO.	D1 mm	D2 mm	T mm	C mm	OAL mm	Wt. Kg.
22	S-16M22T	35.6	51.0	14.0	25.0	55.0	0.48
23	S-16M23T	37.0	51.0	14.0	25.0	55.0	0.48
24	S-16M24T	38.0	51.0	16.0	27.0	57.0	0.50
25	S-16M25T	39.5	51.0	16.0	27.0	57.0	0.50
26	S-16M26T	40.8	51.0	16.0	27.0	57.0	0.51
27	S-16M27T	42.0	51.0	16.0	27.0	57.0	0.52
28	S-16M28T	43.3	51.0	16.0	27.0	57.0	0.52
29	S-16M29T	44.5	51.0	18.0	29.0	59.0	0.54
30	S-16M30T	45.9	51.0	18.0	29.0	59.0	0.55
31	S-16M31T	47.0	51.0	18.0	29.0	59.0	0.55
32	S-16M32T	48.3	51.0	18.0	29.0	59.0	0.56
33	S-16M33T	49.5	51.0	18.0	29.0	59.0	0.56
34	S-16M34T	51.0	51.0	20.0	31.0	61.0	0.59
35	S-16M35T	52.0	54.0	20.0	31.0	61.0	0.65
36	S-16M36T	53.4	54.0	20.0	31.0	61.0	0.69
37	S-16M37T	54.0	54.0	20.0	31.0	61.0	0.69
38	S-16M38T	55.9	54.0	22.0	34.0	64.0	0.75
39	S-16M39T	57.1	54.0	22.0	34.0	64.0	0.78
40	S-16M40T	58.1	54.0	22.0	34.0	64.0	0.79
41	S-16M41T	59.9	54.0	22.0	34.0	64.0	0.82
42	S-16M42T	60.9	54.0	24.0	36.0	66.0	0.85
43	S-16M43T	62.0	54.0	24.0	36.0	66.0	0.86
44	S-16M44T	63.4	54.0	24.0	36.0	66.0	0.88
45	S-16M45T	64.6	54.0	24.0	36.0	66.0	0.89
46	S-16M46T	65.9	54.0	26.0	38.0	68.0	0.93

### FRACTIONAL HEXAGON



A/F inch	MODEL NO.	D1 inch	D2 inch	T inch	C inch	OAL inch	Wt. lbs.
7/8	S-1614T	1.457	2.008	0.551	0.984	2.165	1.06
15/16	S-1615T	1.508	2.008	0.630	1.063	2.244	1.10
1	S-1616T	1.606	2.008	0.630	1.063	2.244	1.12
1.1/16	S-1617T	1.654	2.008	0.630	1.063	2.244	1.13
1.1/8	S-1618T	1.752	2.008	0.709	1.142	2.323	1.18
1.3/16	S-1619T	1.850	2.008	0.709	1.142	2.323	1.21
1.1/4	S-1620T	1.902	2.008	0.709	1.142	2.323	1.23
1.5/16	S-1621T	2.008	2.008	0.787	1.220	2.402	1.29
1.3/8	S-1622T	2.047	2.126	0.787	1.220	2.402	1.44
1.7/16	S-1623T	2.126	2.126	0.787	1.220	2.402	1.51
1.1/2	S-1624T	2.201	2.126	0.866	1.339	2.520	1.65
1.9/16	S-1625T	2.287	2.126	0.866	1.339	2.520	1.73
1.5/8	S-1626T	2.398	2.126	0.945	1.417	2.598	1.87
1.11/16	S-1627T	2.437	2.126	0.945	1.417	2.598	1.89
1.3/4	S-1628T	2.543	2.126	0.945	1.417	2.598	1.97
1.13/16	S-1629T	2.594	2.126	1.024	1.496	2.677	2.05

### METRIC DEEP HEXAGON



A/F mm	MODEL NO.	D1 mm	D2 mm	T mm	C mm	OAL mm	Wt. Kg.
22	S-16M22LT	35.6	54.0	14.0	80.0	110.0	1.05
23	S-16M23LT	37.0	54.0	14.0	80.0	110.0	1.05
24	S-16M24LT	38.3	54.0	16.0	80.0	110.0	1.05
25	S-16M25LT	39.5	54.0	16.0	80.0	110.0	1.10
26	S-16M26LT	40.8	54.0	16.0	80.0	110.0	1.10
27	S-16M27LT	42.0	54.0	16.0	80.0	110.0	1.10
28	S-16M28LT	43.3	54.0	16.0	80.0	110.0	1.15
29	S-16M29LT	44.5	54.0	16.0	80.0	110.0	1.15
30	S-16M30LT	45.9	54.0	21.0	80.0	110.0	1.22
31	S-16M31LT	47.0	54.0	21.0	80.0	110.0	1.21
32	S-16M32LT	48.3	54.0	21.0	80.0	110.0	1.25
33	S-16M33LT	49.5	54.0	21.0	80.0	110.0	1.27
34	S-16M34LT	50.8	54.0	21.0	80.0	110.0	1.30
35	S-16M35LT	52.0	54.0	21.0	80.0	110.0	1.30
36	S-16M36LT	53.4	54.0	25.0	80.0	110.0	1.30
37	S-16M37LT	54.0	54.0	25.0	80.0	110.0	1.45
38	S-16M38LT	55.9	54.0	25.0	80.0	110.0	1.50
39	S-16M39LT	57.1	54.0	25.0	80.0	110.0	1.60
40	S-16M40LT	58.1	54.0	25.0	80.0	110.0	1.60
41	S-16M41LT	59.9	54.0	28.0	80.0	110.0	1.60
42	S-16M42LT	60.9	54.0	28.0	80.0	110.0	1.65
43	S-16M43LT	61.9	54.0	28.0	80.0	110.0	1.70
44	S-16M44LT	63.4	54.0	28.0	80.0	110.0	1.70
45	S-16M45LT	64.6	54.0	28.0	80.0	110.0	1.70
46	S-16M46LT	65.9	54.0	28.0	80.0	110.0	2.15

### FRACTIONAL DEEP HEXAGON



A/F inch	MODEL NO.	D1 inch	D2 inch	T inch	C inch	OAL inch	Wt. lbs.
7/8	S-1614LT	1.417	2.125	0.629	3.149	4.330	2.21
15/16	S-1615LT	1.507	2.125	0.629	3.149	4.330	2.21
1	S-1616LT	1.574	2.125	0.629	3.149	4.330	2.42
1.1/16	S-1617LT	1.653	2.125	0.629	3.149	4.330	2.53
1.1/8	S-1618LT	1.728	2.125	0.629	3.149	4.330	2.53
1.3/16	S-1619LT	1.807	2.125	0.826	3.149	4.330	2.70
1.1/4	S-1620LT	1.889	2.125	0.826	3.149	4.330	2.75
1.5/16	S-1621LT	1.968	2.125	0.826	3.149	4.330	2.95
1.3/8	S-1622LT	2.047	2.125	0.826	3.149	4.330	2.86
1.7/16	S-1623LT	2.125	2.125	0.984	3.149	4.330	3.22
1.1/2	S-1624LT	2.200	2.125	0.984	3.149	4.330	3.30
1.9/16	S-1625LT	2.283	2.125	0.984	3.149	4.330	3.52
1.5/8	S-1626LT	2.358	2.125	1.102	3.149	4.330	3.52
1.11/16	S-1627LT	2.437	2.125	1.102	3.149	4.330	3.52
1.3/4	S-1628LT	2.519	2.125	1.102	3.149	4.330	3.74
1.13/16	S-1629LT	2.594	2.125	1.102	3.149	4.330	3.74

1"

### METRIC HEX DRIVER SOCKETS

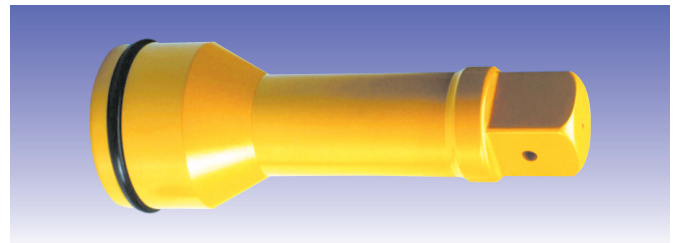
HEX A/F mm	MODEL NO.	BIT LENGTH	OAL mm	Wt Kg.
10	16M10H	20.0	85.0	0.60
12	16M12H	25.0	90.0	0.65
14	16M14H	25.0	90.0	0.75
17	16M17H	30.0	95.0	0.80
19	16M19H	30.0	95.0	0.80
22	16M22H	45.0	115.0	0.90
24	16M24H	45.0	115.0	0.95
27	16M27H	50.0	120.0	1.15
30	16M30H	50.0	120.0	1.20
32	16M32H	50.0	120.0	1.30
36	16M36H	50.0	120.0	1.30

### FRACTIONAL HEX DRIVE SOCKETS

HEX A/F inch	MODEL NO	BIT LENGTH	OAL inch	Wt lbs.
1/2	1608H	0.984	3.543	1.43
9/16	1609H	0.984	3.543	1.65
5/8	1610H	1.181	3.740	1.65
3/4	1612H	1.181	3.740	1.76
13/16	1613H	1.771	4.527	1.87
7/8	1614H	1.771	4.527	1.98
1	1616H	1.968	4.724	2.20
1.1/16	1617H	1.968	4.724	2.20
1.1/8	1618H	1.968	4.724	2.42
1.3/16	1619H	1.968	4.724	2.64
1.1/4	1620H	1.968	4.724	2.86

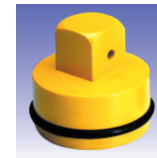
### REGULAR EXTENSIONS

OAL mm (inch)	MODEL NO.	SHANK DIA mm (inch)	HEAD DIA mm (inch)	Wt Kg. (lbs.)
100 (4")	E1604	36.0 (1.417)	54.0 (2.125)	1.10 (2.42)
125 (5")	E1605			1.30 (2.86)
150 (6")	E1606			1.50 (3.30)
180 (7")	E1607	36.0 (1.417)	54.0 (2.125)	1.75 (3.85)
250 (10")	E1610			2.00 (4.40)
330 (13")	E1613			2.45 (5.39)



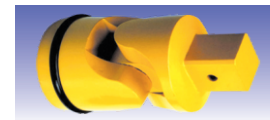
### SQUARE ADAPTORS

SIZE	MODEL NO.	HEAD DIA mm (inch)	OAL mm (inch)	Wt Kg. (lbs.)
1" F X 3/4" M	A1612	54.0 (2.125)	70.0 (2.755)	0.64 (1.40)
1" F X 1.1/2" M	A1624		90.0 (3.543)	0.90 (1.98)
1" F X #5 M	A1695		110.0 (4.330)	1.20 (2.64)



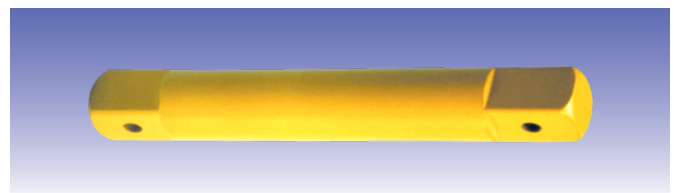
### UNIVERSAL JOINT

SQUARE DRIVE	MODEL NO.	DIA mm (inch)	OAL mm (inch)	Wt Kg. (lbs.)
1"	U1616	54.0 (2.125)	117.0 (4.606)	1.20 (2.64)



### DOUBLE MALE EXTENSIONS

OAL mm (inch)	MODEL NO.	SHANK DIA mm (inch)	HEAD DIA mm (inch)	Wt Kg. (lbs.)
75 (3")	S1603	35.0 (1.377)	25.0 (1.000)	0.70 (1.54)
125 (5")	S1605			1.00 (2.20)
180 (7")	S1607			1.45 (3.19)
250 (10")	S1610	35.0 (1.377)	25.0 (1.000)	1.70 (3.74)
330 (13")	S1613			2.20 (4.84)
380 (15")	S1615	35.0 (1.377)	25.0 (1.000)	2.50 (5.50)
430 (17")	S1617			3.00 (6.60)



### DOUBLE FEMALE ADAPTORS

SIZE	MODEL NO.	HEAD DIA mm (inch)	OAL mm (inch)	Wt Kg. (lbs.)
1" F X 3/4" F	AN1612	54.0 (2.125)	65.0 (2.559)	0.75 (1.65)
1" F X 1" F	AN1616		70.0 (2.755)	0.95 (2.09)
1" F X 1.1/2" F	AN1624		80.0 (3.149)	1.10 (2.42)

