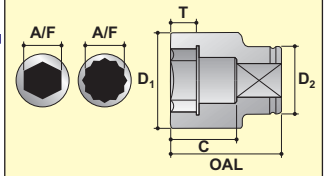
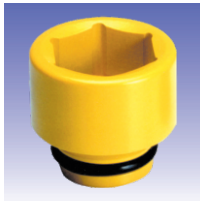


## IMPACT SOCKETS

2 1/2"



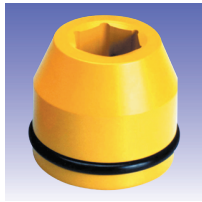
A/F Nominal size across flats  
 D1 Max. outside dia. socket end  
 D2 Max. outside dia. sq. drive end  
 OAL Nominal overall length  
 T Min. depth of socket form  
 C Bolt clearance depth

### METRIC HEXAGON

A/F mm	MODEL NO.	D1 mm	D2 mm	T mm	C mm	OAL mm	Wt. Kg.
43	S-40M43	86.0	116.0	28.0	46.0	104.0	5.24
44	S-40M44	86.0	116.0	28.0	46.0	104.0	5.20
45	S-40M45	86.0	116.0	28.0	46.0	104.0	5.15
46	S-40M46	86.0	116.0	28.0	46.0	104.0	5.11
47	S-40M47	86.0	116.0	28.0	46.0	104.0	5.06
48	S-40M48	86.0	116.0	28.0	46.0	104.0	5.01
49	S-40M49	86.0	116.0	28.0	46.0	104.0	4.97
50	S-40M50	86.1	116.0	28.0	46.0	104.0	4.92
51	S-40M51	90.0	116.0	29.0	46.0	104.0	5.07
52	S-40M52	90.0	116.0	29.0	46.0	104.0	5.02
54	S-40M54	92.5	124.0	30.0	46.0	104.0	5.87
55	S-40M55	93.8	124.0	32.0	52.0	110.0	6.08
56	S-40M56	95.0	124.0	32.0	52.0	110.0	6.10
57	S-40M57	96.3	124.0	32.0	52.0	110.0	6.12
58	S-40M58	97.5	124.0	32.0	52.0	110.0	6.14
59	S-40M59	98.8	127.0	34.0	54.0	112.0	6.55
60	S-40M60	100.0	127.0	36.0	56.0	114.0	6.64
62	S-40M62	103.0	127.0	36.0	56.0	114.0	6.69
65	S-40M65	106.0	127.0	38.0	58.0	116.0	6.83
67	S-40M67	109.0	127.0	38.0	58.0	116.0	6.89
70	S-40M70	113.0	127.0	40.0	60.0	118.0	7.05
73	S-40M73	116.0	127.0	40.0	60.0	118.0	7.13
75	S-40M75	119.0	127.0	42.0	64.0	122.0	7.38
76	S-40M76	120.0	127.0	44.0	64.0	122.0	7.39
80	S-40M80	125.0	127.0	44.0	64.0	122.0	7.50
85	S-40M85	129.0	127.0	48.0	68.0	126.0	8.06
86	S-40M86	132.0	127.0	50.0	68.0	129.0	8.59
90	S-40M90	136.0	127.0	52.0	70.0	130.0	8.87
95	S-40M95	142.0	127.0	54.0	72.0	132.0	9.37
100	S-40M100	148.0	127.0	56.0	78.0	138.0	10.20
105	S-40M105	154.0	127.0	60.0	82.0	142.0	10.99
110	S-40M110	161.0	127.0	64.0	86.0	146.0	11.89
115	S-40M115	165.0	127.0	67.0	89.0	149.0	12.19
120	S-40M120	173.0	127.0	70.0	92.0	152.0	13.30
125	S-40M125	179.0	127.0	73.0	95.0	153.0	13.68
130	S-40M130	185.0	127.0	76.0	98.0	156.0	14.52
135	S-40M135	192.0	152.0	79.0	103.0	161.0	18.37
140	S-40M140	196.0	152.0	82.0	106.0	164.0	18.58
145	S-40M145	204.0	152.0	85.0	109.0	167.0	20.22
150	S-40M150	211.0	152.0	88.0	112.0	170.0	21.37
155	S-40M155	215.0	152.0	91.0	117.0	175.0	22.04
160	S-40M160	223.0	152.0	94.0	120.0	178.0	23.92
165	S-40M165	229.0	175.0	96.0	122.0	180.0	27.19
170	S-40M170	235.0	175.0	98.0	126.0	184.0	28.93
175	S-40M175	242.0	175.0	100.0	128.0	186.0	30.20
180	S-40M180	246.0	175.0	103.0	131.0	189.0	30.28
185	S-40M185	254.0	175.0	106.0	134.0	192.0	32.54
190	S-40M190	261.0	175.0	109.0	137.0	195.0	34.04
195	S-40M195	265.0	175.0	112.0	142.0	200.0	34.80
200	S-40M200	273.0	175.0	115.0	145.0	203.0	37.49
210	S-40M210	285.0	175.0	120.0	150.0	208.0	39.91
215	S-40M215	292.0	175.0	123.0	153.0	211.0	41.94
225	S-40M225	304.0	175.0	130.0	160.0	218.0	45.71

### METRIC DEEP HEXAGON

A/F mm	MODEL NO.	D1 mm	D2 mm	T mm	C mm	OAL mm	Wt. Kg.
43	S-40M43L	86.0	106.0	26.0	110.0	168.0	6.43
44	S-40M44L	86.0	106.0	26.0	110.0	168.0	6.36
45	S-40M45L	86.0	106.0	26.0	110.0	168.0	6.29
46	S-40M46L	86.0	106.0	27.0	110.0	168.0	6.22
47	S-40M47L	86.0	106.0	28.0	110.0	168.0	6.14
48	S-40M48L	86.0	116.0	28.0	110.0	168.0	7.03
49	S-40M49L	86.0	116.0	28.0	110.0	168.0	6.95
50	S-40M50L	86.0	116.0	29.0	110.0	168.0	6.86
51	S-40M51L	90.0	116.0	29.0	110.0	168.0	7.24
52	S-40M52L	90.0	116.0	29.0	110.0	168.0	7.16
54	S-40M54L	92.5	124.0	30.0	110.0	168.0	8.11
55	S-40M55L	93.8	124.0	32.0	110.0	168.0	8.18
56	S-40M56L	95.0	124.0	32.0	117.0	175.0	8.51
57	S-40M57L	96.3	124.0	32.0	117.0	175.0	8.58
58	S-40M58L	97.5	124.0	32.0	117.0	175.0	8.65
59	S-40M59L	98.8	127.0	34.0	117.0	175.0	9.04
60	S-40M60L	100.0	127.0	36.0	117.0	175.0	9.10
62	S-40M62L	103.0	127.0	36.0	127.0	185.0	9.66
65	S-40M65L	106.0	127.0	38.0	127.0	185.0	9.90
67	S-40M67L	109.0	127.0	38.0	127.0	185.0	10.13
70	S-40M70L	113.0	127.0	40.0	127.0	185.0	10.37
73	S-40M73L	116.0	127.0	40.0	127.0	185.0	10.62
75	S-40M75L	119.0	127.0	42.0	127.0	185.0	10.78
76	S-40M76L	120.0	127.0	44.0	127.0	185.0	10.85
80	S-40M80L	125.0	127.0	44.0	127.0	185.0	11.20
85	S-40M85L	129.0	127.0	48.0	137.0	195.0	12.42
86	S-40M86L	132.0	127.0	50.0	134.0	195.0	13.03
90	S-40M90L	136.0	127.0	52.0	135.0	195.0	13.40
95	S-40M95L	142.0	127.0	54.0	139.0	199.0	14.47
100	S-40M100L	148.0	127.0	56.0	135.0	195.0	15.07
105	S-40M105L	154.0	127.0	60.0	145.0	205.0	16.33
110	S-40M110L	161.0	127.0	64.0	149.0	109.0	17.67
115	S-40M115L	165.0	127.0	67.0	150.0	210.0	17.72
120	S-40M120L	173.0	127.0	70.0	150.0	210.0	19.23
125	S-40M125L	179.0	127.0	73.0	157.0	215.0	20.57
130	S-40M130L	185.0	127.0	76.0	157.0	215.0	21.44
135	S-40M135L	192.0	152.0	79.0	162.0	220.0	25.67
140	S-40M140L	196.0	152.0	82.0	167.0	225.0	26.22
145	S-40M145L	204.0	152.0	85.0	172.0	230.0	28.82
150	S-40M150L	211.0	152.0	88.0	172.0	230.0	30.38
155	S-40M155L	215.0	152.0	91.0	177.0	235.0	30.97
160	S-40M160L	223.0	152.0	94.0	177.0	235.0	33.49
165	S-40M165L	229.0	175.0	96.0	182.0	240.0	37.53
170	S-40M170L	235.0	175.0	98.0	182.0	240.0	39.22
175	S-40M175L	242.0	175.0	100.0	182.0	240.0	40.86
180	S-40M180L	246.0	175.0	103.0	187.0	245.0	41.63
185	S-40M185L	254.0	175.0	106.0	192.0	250.0	45.61
190	S-40M190L	261.0	175.0	109.0	192.0	250.0	46.93
195	S-40M195L	265.0	175.0	112.0	199.0	257.0	48.28
200	S-40M200L	273.0	175.0	115.0	202.0	260.0	51.89
210	S-40M210L	285.0	175.0	120.0	202.0	260.0	54.71
215	S-40M215L	292.0	175.0	123.0	212.0	270.0	59.42
225	S-40M225L	304.0	175.0	130.0	220.0	270.0	62.42



### FRACTIONAL HEXAGON



### FRACTIONAL DEEP HEXAGON



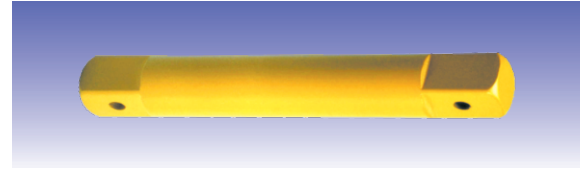
A/F inch	MODEL NO.	D1 inch	D2 inch	T inch	C inch	OAL inch	Wt. lbs.
1.5/8	S-4026	3.386	4.567	1.102	1.811	4.094	11.30
1.3/4	S-4028	3.386	4.567	1.102	1.811	4.094	11.30
1.7/8	S-4030	3.386	4.567	1.102	1.811	4.094	11.30
2	S-4032	3.543	4.567	1.142	1.811	4.094	11.10
2.1/8	S-4034	3.642	4.882	1.181	1.811	4.094	12.90
2.1/4	S-4036	3.789	4.882	1.260	2.047	4.331	13.50
2.3/8	S-4038	3.937	5.000	1.417	2.205	4.488	14.60
2.1/2	S-4040	4.133	5.000	1.496	2.283	4.567	15.00
2.5/8	S-4042	4.281	5.000	1.496	2.283	4.567	15.20
2.3/4	S-4044	4.429	5.000	1.575	2.362	4.646	15.50
2.7/8	S-4046	4.577	5.000	1.575	2.362	4.646	15.70
2.15/16	S-4047	4.675	5.000	1.654	2.520	4.803	16.20
3	S-4048	4.774	5.000	1.732	2.520	4.803	16.40
3.1/8	S-4050	4.921	5.000	1.732	2.520	4.803	16.50
3.1/4	S-4052	4.999	5.000	1.890	2.677	4.961	16.70
3.3/8	S-4054	5.197	5.000	1.969	2.677	5.079	18.90
3.1/2	S-4056	5.354	5.000	2.047	2.756	5.118	19.50
3.5/8	S-4058	5.394	5.000	2.047	2.756	5.118	20.40
3.3/4	S-4060	5.591	5.000	2.126	2.835	5.197	20.60
3.7/8	S-4062	5.787	5.000	2.205	3.071	5.433	21.60
4	S-4064	5.827	5.000	2.205	3.071	5.433	22.40
4.1/8	S-4066	6.063	5.000	2.362	3.228	5.591	24.20
4.1/4	S-4068	6.299	5.000	2.520	3.386	5.748	25.50
4.3/8	S-4070	6.379	5.000	2.520	3.386	5.748	26.40
4.1/2	S-4072	6.496	5.000	2.638	3.504	5.866	26.80
4.5/8	S-4074	6.536	5.000	2.638	3.504	5.866	28.00
4.7/8	S-4078	7.047	5.000	2.874	3.740	6.024	30.10
5	S-4080	7.163	5.000	2.992	3.858	6.142	31.00
5.1/8	S-4082	7.203	5.000	2.992	3.858	6.142	32.10
5.1/4	S-4084	7.203	5.000	2.992	3.858	6.142	32.10
5.3/8	S-4086	7.609	5.984	3.110	4.055	6.339	41.10
5.1/2	S-4088	7.717	5.984	3.228	4.173	6.457	40.90
5.5/8	S-4090	7.757	5.984	3.228	4.173	6.457	41.70
5.3/4	S-4092	8.081	5.984	3.346	4.291	6.575	45.20
6.1/8	S-4098	9.016	6.890	3.780	4.803	7.087	59.80
6.1/2	S-40104	9.016	6.890	3.780	4.803	7.087	59.80
6.7/8	S-40110	9.528	6.890	3.937	5.039	7.323	66.40
7	S-40112	9.685	6.890	4.055	5.157	7.441	66.60
7.1/4	S-40116	10.000	6.890	4.173	5.276	7.559	71.60
7.1/2	S-40120	10.276	6.890	4.291	5.394	7.677	74.90
7.5/8	S-40122	10.433	6.890	4.409	5.591	7.874	76.60
7.3/4	S-40124	10.433	6.890	4.409	5.591	7.874	76.60
7.7/8	S-40126	10.748	6.890	4.528	5.709	7.992	82.50
8	S-40128	10.748	6.890	4.528	5.709	7.992	83.60
8.1/8	S-40130	11.220	6.890	4.724	5.906	8.189	87.80
8.1/4	S-40132	11.220	6.890	4.724	5.906	8.189	87.80
8.3/8	S-40134	11.225	6.890	4.724	5.906	8.189	88.70
8.1/2	S-40136	11.496	6.890	4.843	6.024	8.307	92.30
9	S-40144	12.029	6.890	5.118	6.299	8.583	101.80
9.1/4	S-40148	12.029	6.890	5.118	6.299	8.583	101.80

A/F inch	MODEL NO.	D1 inch	D2 inch	T inch	C inch	OAL inch	Wt. lbs.
1.5/8	S-4026L	3.386	4.173	1.024	4.331	6.614	13.80
1.3/4	S-4028L	3.386	4.173	1.024	4.331	6.614	13.80
1.7/8	S-4030L	3.386	4.567	1.102	4.331	6.614	13.80
2	S-4032L	3.543	4.567	1.142	4.331	6.614	15.90
2.1/8	S-4034L	3.642	4.882	1.181	4.331	6.614	17.80
2.1/4	S-4036L	3.789	4.882	1.260	4.606	6.890	18.90
2.3/8	S-4038L	3.937	5.000	1.417	4.606	6.890	20.00
2.1/2	S-4040L	4.133	5.000	1.496	5.000	7.283	21.80
2.5/8	S-4042L	4.281	5.000	1.496	5.000	7.283	22.30
2.3/4	S-4044L	4.429	5.000	1.575	5.000	7.283	22.80
2.7/8	S-4046L	4.577	5.000	1.575	5.000	7.283	23.40
2.15/16	S-4047L	4.675	5.000	1.654	5.000	7.283	23.70
3	S-4048L	4.774	5.000	1.732	5.000	7.283	24.10
3.1/8	S-4050L	4.921	5.000	1.732	5.000	7.283	24.60
3.1/4	S-4052L	4.999	5.000	1.890	5.394	7.677	26.30
3.3/8	S-4054L	5.197	5.000	1.969	5.276	7.677	28.70
3.1/2	S-4056L	5.354	5.000	2.047	5.315	7.677	29.50
3.5/8	S-4058L	5.394	5.000	2.047	5.315	7.677	30.40
3.3/4	S-4060L	5.591	5.000	2.126	5.472	7.835	31.80
3.7/8	S-4062L	5.787	5.000	2.205	5.315	7.677	32.40
4	S-4064L	5.827	5.000	2.205	5.315	7.677	33.20
4.1/8	S-4066L	6.063	5.000	2.362	5.709	8.071	35.90
4.1/4	S-4068L	6.299	5.000	2.520	5.866	8.228	38.20
4.3/8	S-4070L	6.379	5.000	2.520	5.866	8.228	39.10
4.1/2	S-4072L	6.496	5.000	2.638	5.906	8.268	39.00
4.5/8	S-4074L	6.536	5.000	2.638	5.906	8.268	40.20
4.7/8	S-4078L	7.047	5.000	2.874	6.181	8.465	45.30
5	S-4080L	7.163	5.000	2.992	6.181	8.465	47.20
5.1/8	S-4082L	7.203	5.000	2.992	6.181	8.465	48.30
5.1/4	S-4084L	7.203	5.000	2.992	6.181	8.465	48.30
5.3/8	S-4086L	7.609	5.984	3.110	6.378	8.661	57.20
5.1/2	S-4088L	7.717	5.984	3.228	6.575	8.858	57.70
5.5/8	S-4090L	7.757	5.984	3.228	6.575	8.858	58.50
5.3/4	S-4092L	8.081	5.984	3.346	6.772	9.055	64.10
6.1/8	S-4098L	9.016	6.890	3.780	7.165	9.449	82.60
6.1/2	S-40104L	9.016	6.890	3.780	7.165	9.449	82.60
6.7/8	S-40110L	9.528	6.890	3.937	7.165	9.449	89.90
7	S-40112L	9.685	6.890	4.055	7.362	9.646	91.60
7.1/4	S-40116L	10.000	6.890	4.173	7.559	9.843	100.30
7.1/2	S-40120L	10.276	6.890	4.291	7.559	9.843	103.20
7.5/8	S-40122L	10.433	6.890	4.409	7.835	10.118	106.20
7.3/4	S-40124L	10.433	6.890	4.409	7.835	10.118	106.20
7.7/8	S-40126L	10.748	6.890	4.528	7.953	10.236	114.20
8	S-40128L	10.798	6.890	4.528	7.953	10.236	115.30
8.1/8	S-40130L	11.220	6.890	4.724	7.953	10.236	120.40
8.1/4	S-40132L	11.220	6.890	4.724	7.953	10.236	120.40
8.3/8	S-40134L	11.225	6.890	4.724	7.953	10.236	121.30
8.1/2	S-40136L	11.496	6.890	4.843	8.346	10.630	130.70
9	S-40144L	12.029	6.890	5.118	8.661	10.630	138.50
9.1/4	S-40148L	12.029	6.890	5.118	8.661	10.630	138.50

2 1/2"

### DOUBLE MALE EXTENSIONS

OAL mm (inch)	MODEL NO.	SHANK DIA mm (inch)	HEAD DIA mm (inch)
125 (5") 150 (6") 200 (8")	S4005 S4006 S4008	85.0 (3.346)	63.5 (2.500)
250 (10") 380 (15") 510 (20")	S4010 S4015 S4020		



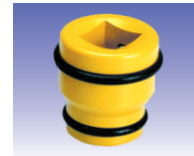
### SQUARE ADAPTORS

SIZE	MODEL NO.	HEAD DIA mm (inch)	OAL mm (inch)
2.1/2" F X 1.1/2" M 2.1/2" F X 3.1/2" M	A4024 A4056	127.0 (5.000)	140.0 (5.511) 185.0 (7.283)



### DOUBLE FEMALE ADAPTORS

SIZE	MODEL NO.	HEAD DIA mm (inch)	OAL mm (inch)
2.1/2" F X 1.1/2" F 2.1/2" F X 2.1/2" F 2.1/2" F X 3.1/2" F	AN4024 AN4040 AN4056	127.0 (5.000)	115.0 (4.527) 120.0 (4.724) 162.0 (6.377)



### UNIVERSAL JOINT

SQUARE DRIVE	MODEL NO.	DIA mm (inch)	OAL mm (inch)
2.1/2"	U4040	127.0 (5.000)	232.0 (9.133)

