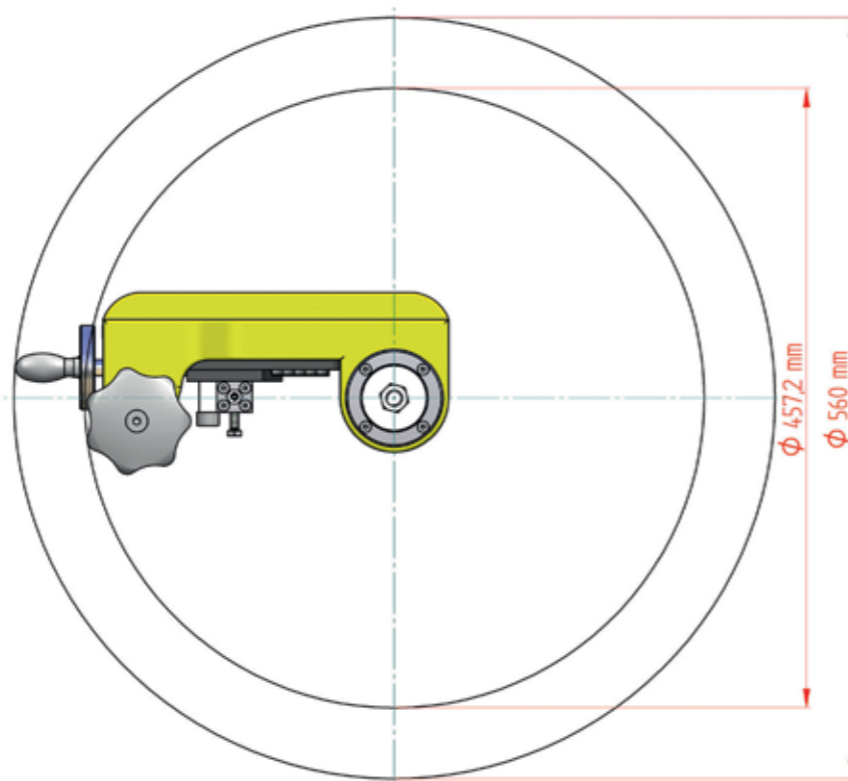
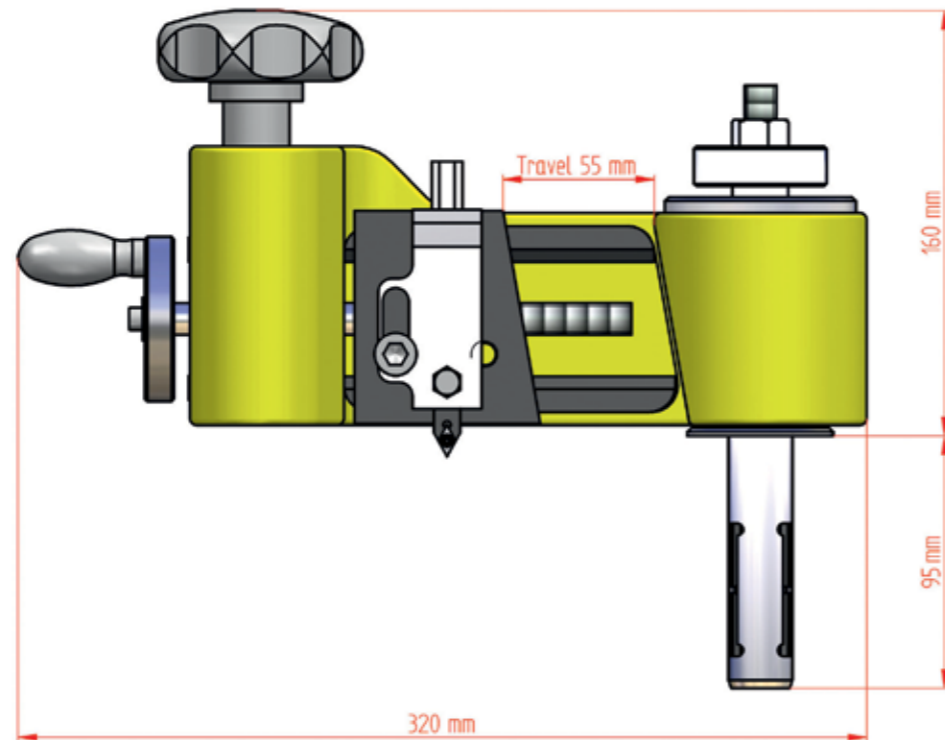


LMC Mini - Facer[®]™ Dimensions



LMC Mini - Facer[®]™

Manual Operated Flange Facer
For re-machining damaged flange faces



Operational data

Min int clamp cap: \varnothing 25,4 mm (1")
Max int clam cap: \varnothing 252 mm (\pm 10")
Min facing diam: \varnothing 30 mm: \pm 1 1/4"
Max facing diam: \pm \varnothing 350 mm: 14"

Dimentional data

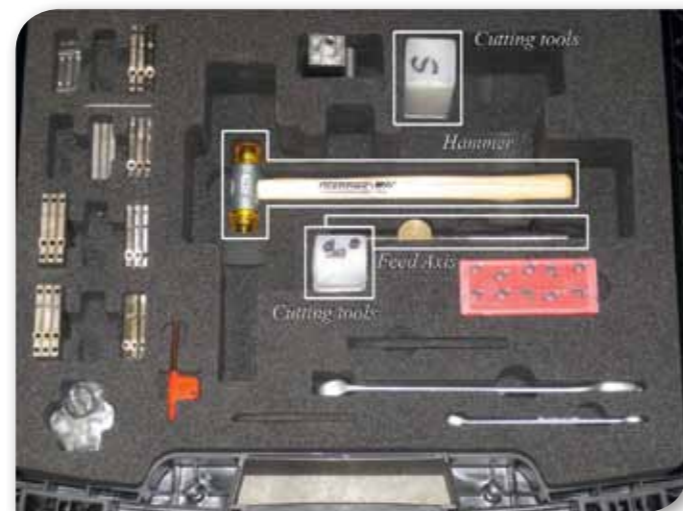
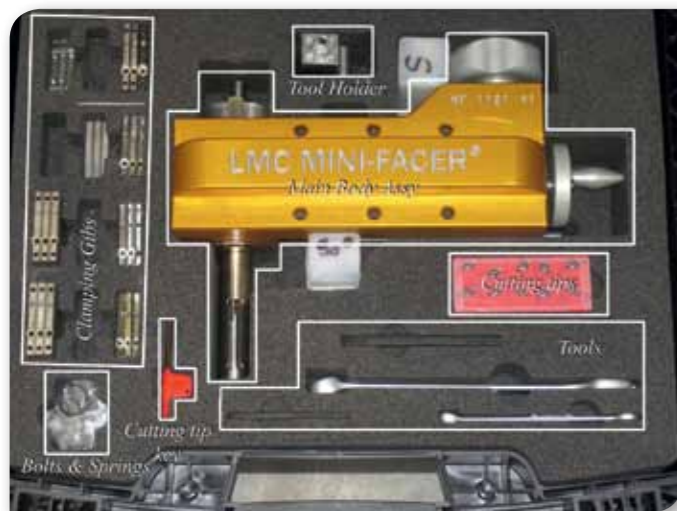
Weight ready to use: 7 kg (15.4 lbs)
Overall length: 320 mm (\pm 12.5")
Height from Flange face upward: +/- 200 mm (8")
Minimum swing diameter: \varnothing 457,2 mm (18")

Len Matec



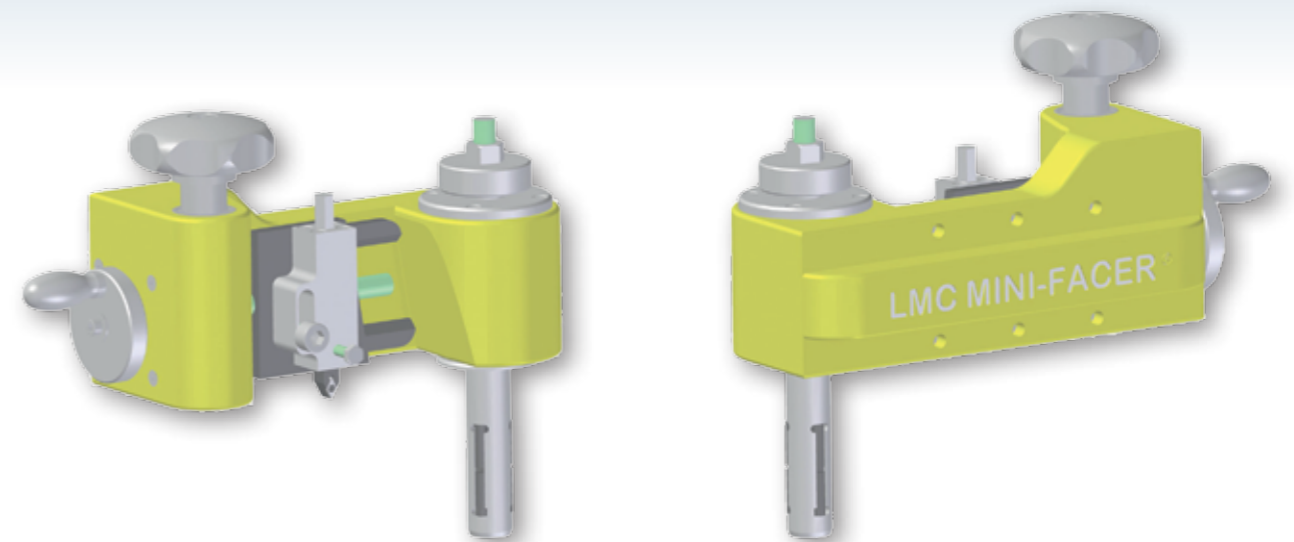


Delivery consisting off



- **Complete set of hardened internal grippers**
→ Range from 25,4mm (1") id up to and included 252 mm (± 10")
- **2 off (easy exchangeable) feed screws ASME 16.5 i.e.:**
 - 1 off for Smooth finish
 - 1 off for Stock finish
- **Sturdy Carry / transport case with compartments for all components**
- **The Mini Facer™ comes ready to use**

- **Set off handtools consisting off:**
 - Plastic Hammer, allen keys, spanners, toolbit TORX bit
- **Cutting tool**
 - 1 straight (neutral) toolbit holder
 - 1 pc angled 90° toolbit holder
 - Start set of Cutting tips suitable for :
 - Carbon steel, Stainless steel, aluminium



Flange facing made easy with the "LMC Mini Facer"

This easy to operate hand held flange facer, allows any technician to recondition RF / FF and other gasket seatings in situ. The internal diameter that can be clamped, is $\pm \text{ø}1$ "to $\pm \text{ø}10$ ". Due to clamping and machining range, the Mini Facer is a very efficient tool for service or repair workshop but also for piping construction companies and or vessel manufacturers.

Developped and manufactured by:

LenMatec bvba

Ambachtsstraat 7
B 3980 Tessenderlo
Belgium
Tel. (+)32 (0) 13 67 66 90
Fax (+)32 (0) 13 67 68 06

Mail to: info@lenmatec.be
WWW.LENMATEC.BE

